

WAPP SOFTWARE **FOR WEETAG / NAUTICAL TAGS** **User Manual**

Version 1 Sept 2025

**MINIATURE
TEMPERATURE
DATA LOGGER**



Note from Alpha Mach

Thank you for choosing our Weetag/Nauticals® products.

Our mission is to deliver miniature, heavy-duty instruments that are exceptionally rugged, highly precise, and reliable—at a price that fits constrained research budgets. This enables you to deploy enough units to capture the data required for robust, defensible results.

Notre mission est de fournir des instruments miniatures, robustes et durables, d'une grande précision et fiabilité — à un prix adapté aux budgets de recherche restreints. Vous pouvez ainsi déployer suffisamment d'unités pour obtenir les données nécessaires à des résultats solides et probants.

Your feedback is very important to us. Should you have any comments, questions or if you need a customized solution, please feel free to contact us.

Robert Turcotte, P. Eng.
General Manager

Introduction

The WeeTag® and Nautical® data loggers come in all shapes and sizes. All are supported by the WAPP® free software application. Latest versions of the WAPP® application can be found on our website.

This manual takes you step-by-step through the program installation, hardware connections, and missioning process.

To use the WAPP software, you must have access to a computer with Windows 7 or higher. It is not yet supported by Apple systems.

WeeTag® and Nautical® are registered trademark of Alpha Mach Inc.

iButton® and ThermoChron® are registered trademarks of Analog Devices.

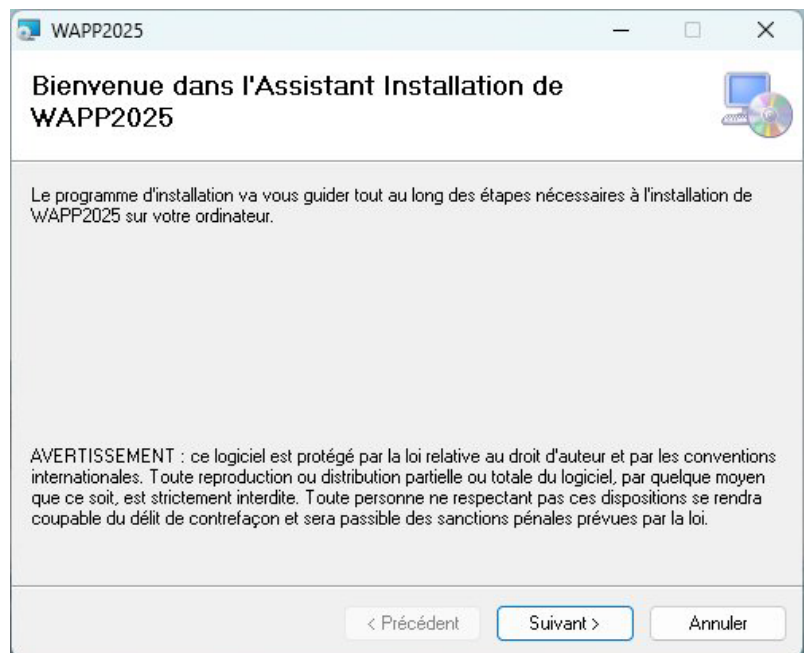
WAPP® Software

WAPP® is a free software application we developed to interface with all Alpha Mach products. It basically allows the user to mission his loggers, retrieve the data, and export the data as a text file. WeeButton® will work with the Weetag family of products, the WeePit, WeeDip, WeeBat WeePik and all the Nautical products.

Installation

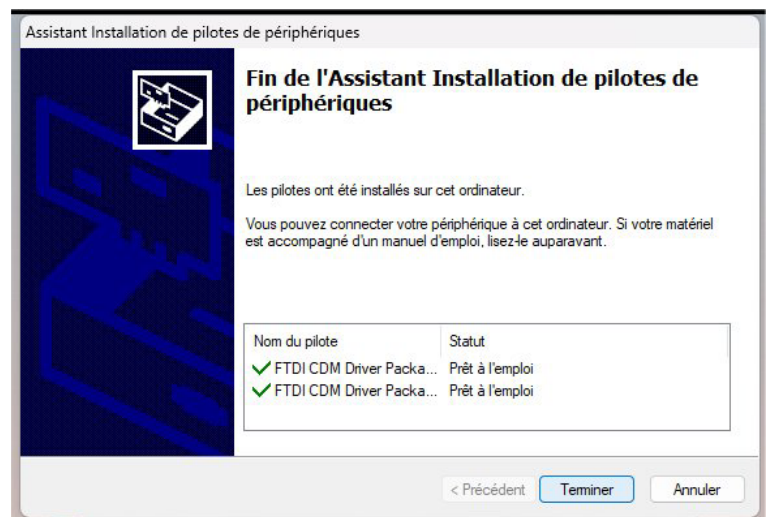
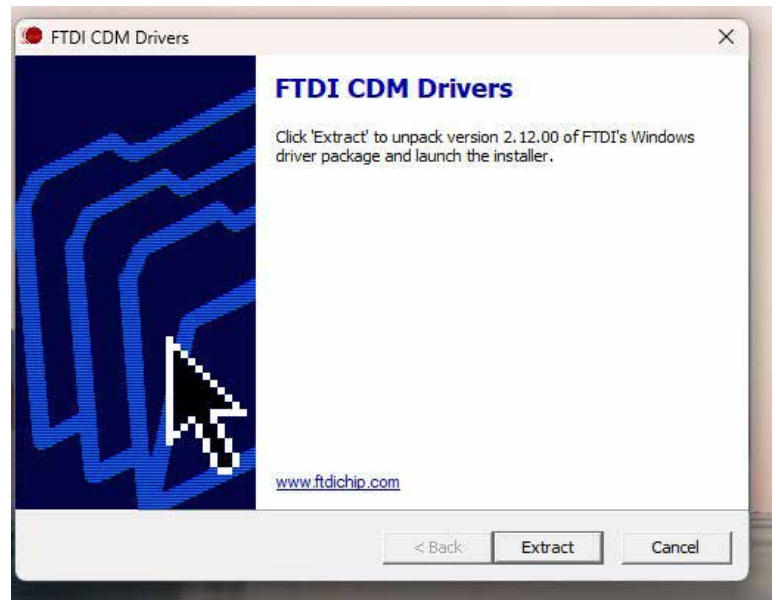
If it's the first time you're installing WAPP®, please make sure you follow these steps:

1. Download the latest versions of the WAPP® application from our website:
https://www.alphamach.com/softwares/WAPP_23_01_12.zip
2. Unzip the file «WAPP_XXXX.zip»
3. Launch the Setup.exe. The program will install first and then will install the drivers if required.



Installation

4. Make sure you install FTDI CDM Drivers correctly. Two more installations will open. If there are any problems regarding this installation, please visit FTDI's webpage:
<http://www.ftdichip.com/FTDrivers.htm>
5. Make sure you install Microsoft Visual J# 2.0 Redistributable correctly if needed. If there are any problems regarding this installation, please visit Microsoft's webpage:
<http://www.microsoft.com/en-ca/download/details.aspx?id=4712>.



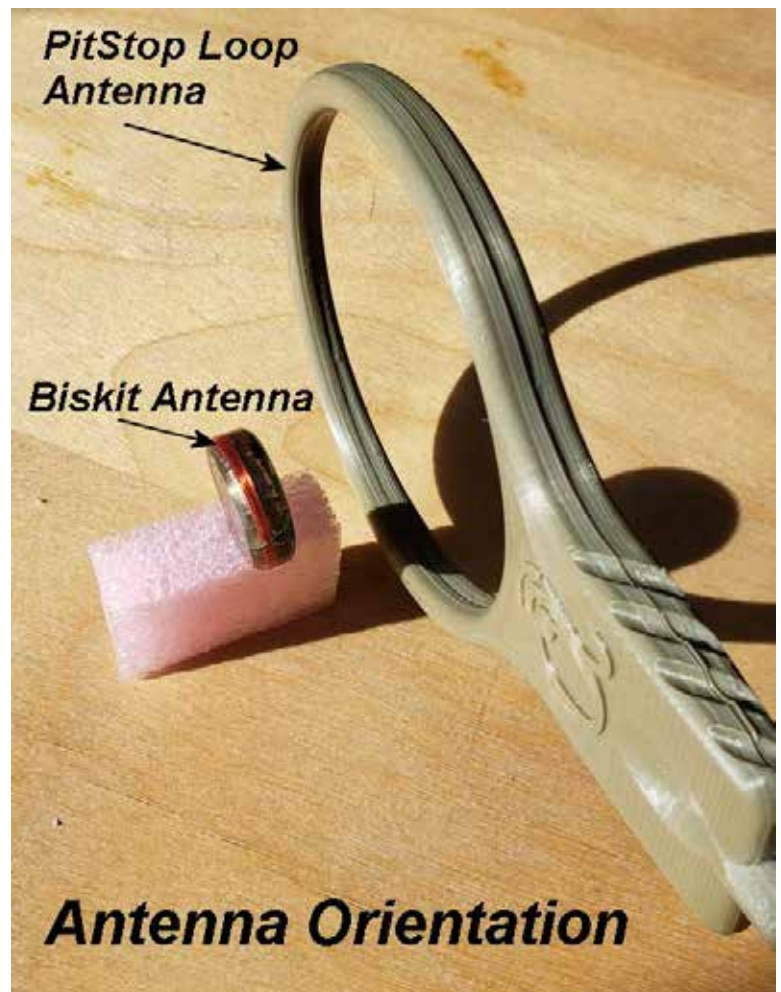
Connection and Missionning

Once the installation is completed, plug in the PitStop antenna **A**.

The PitStop is a low-frequency RFID antenna (134.2 kHz) with a USB connection to your computer. Place the WeeTag/Nautical inside the loop.

For strongest coupling, keep the WeeTag's internal coil on the same plane (coplanar) as the PitStop coil.

Best placement: position the WeeTag along the outer perimeter (edge) of the antenna, beside the coil, at < 2 cm from the antenna plane. Keep the WeeTag parallel to the antenna surface.



First Set-Up the Application

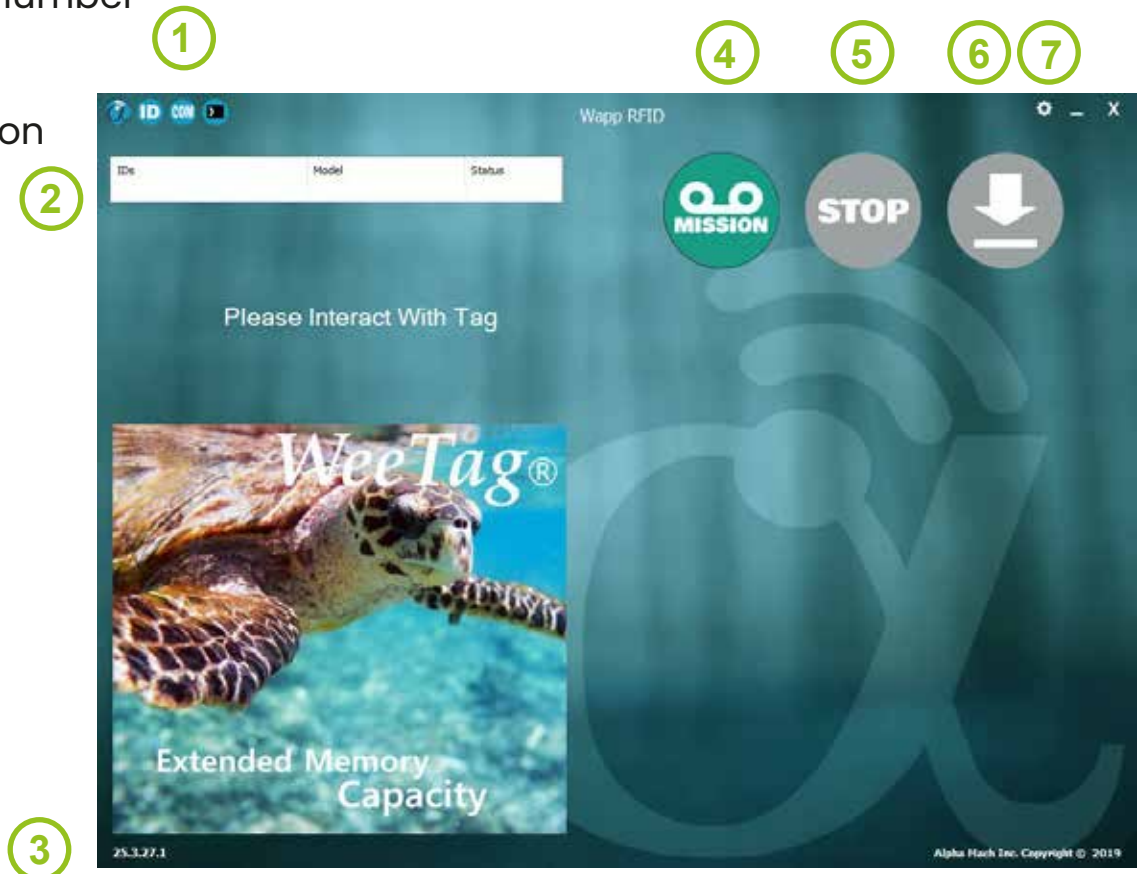
When you open the WAPP software, this is the first panel to appear. If the middle button is blue, it means that the PitStop antenna is properly installed and recognized by your computer. Click on it to proceed.

If it is gray, refer to the troubleshooting section at the end.



The main window will present these informations:

1. Icons for additional information
2. WeeTag serial number / Model / Status
3. WAPP Version number
4. Mission Button
5. Stop Button
6. Download Button
7. Setup



First Set-Up the Application

Press on the «SETUP» icon to access the software options:

1. File download location:
This is where your downloaded data will be saved, set it either on your desktop or best in a specific folder in your Documents folder.
2. Language
3. Light units
4. DATE / TIME format: **It is very important that these units match your time/date settings of your window system.**
5. Temperature units
6. Pressure units

NOTE: It is very important that you **click on the disk button** (7) that will appear (whenever something have been changed in the settings) to save your choices.



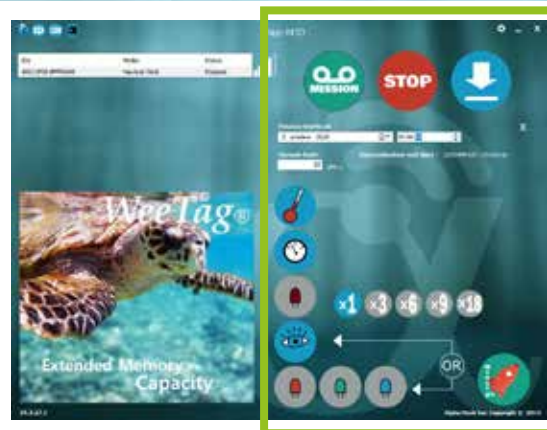
Connection and Missioning

Missioning functions

Place a Weetag/ Nautical over the PitStop antenna.

When the tag is recognized:

1. It's serial number will appear in the IDs box
2. Model type
3. Status:
 - a. Stopped
 - b. Programmed
 - c. Running
4. Antenna signal strength level bars



Press on the Mission Button to open the missioning parameters:

- A. Mission Start Date / Hour
- B. Sample Rate
- C. Temperature
- D. Pressure / Depth
- E. Infrared light
- F. Ambient light
- G. Red light
- H. Green light
- I. Blue light
- J. Luminosity gain
- K. START MISSION button



IMPORTANT:

The parameters that you can set depends on the Weetag / Nautical type. If not equipped with a light or pressure sensor, only the Temperature parameter will appear.



Connection and Missioning

Ensure you press the START button to save the parameters and start the mission.

A progress percentage will appear (1).

A green check mark must appear to confirm that the mission has been properly programmed (2).



Stop and Download

It is advised to Stop the mission before downloading the results. Press the STOP button, once the Green check mark appears, the tag status changes to «STOPPED».

Press the DOWNLOAD button to start the download process. A download progress (1) status will appear.

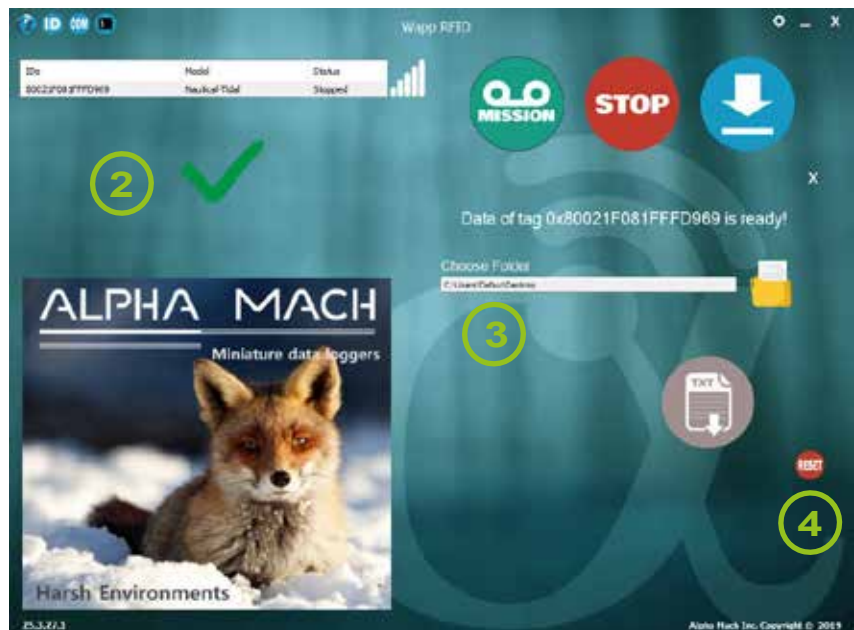
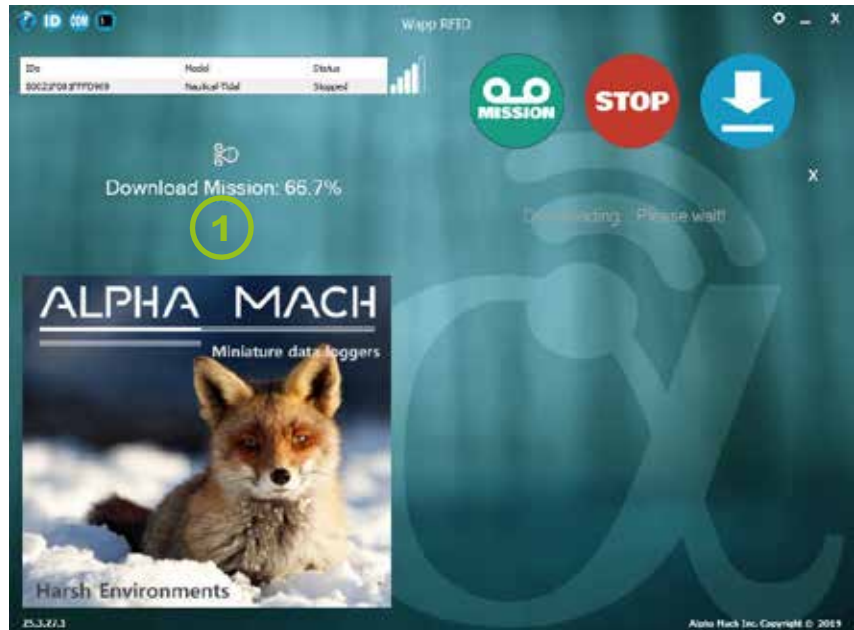
Once the download process is completed, the green (2) checkmark will appear with the TEXT button. Click on the TEXT button to save the data to your selected data folder (3)

IMPORTANT:

If the download process stops because of a communication issue, remove the Weetag/Nautical from the PitStop Antenna for a 10 seconds, put back in the field and presse the DOWNLOAD button again. The download will resume where it last stopped.

If for any reasons. you need to restart the complete download again, you can press the RESET button (4) next to the TEXT button. The download will restart completely from the beginning.

If you have any problems with the download, refer to our troubleshooting pages at the end of this section.



Export File

The text file generated will provide these information:

1. WAPP Rev: the WAPP® version used to record the mission
2. WeeTag S/N : the WeeTag's serial number, which is a unique 64 bits hexadecimal number.
3. Weetag Type: iButton® type recorded
4. Mission Running: True/False: If the mission is running (True) or if it has stopped (False)
5. Mission Init Date: the date and time the mission was initiated on
6. Mission Start-up: the data and time the logger started recording data
7. Temp. Sample Rates: the sample rate that was set for the mission for all parameters
8. Calibration information (only usefull for the manufacturing process)..
9. Data Information
10. The data is presented with the date and Temperature measures in two columns.

The text file can be dragged over an Excel file to have all the data properly allocated in their respective columns and to later to make an graph or other data processing.

```
Alpha Mach Inc.  
619A rue Richelieu, St-Marc-Sur-Richelieu,  
450-584-3400  
info@alphamach.com  
www.alphamach.com  
WAPP version    25.3.27.1  
Core version    25.03.27.1
```

Logger Info

```
-----  
ID      80021F081FFFD969  
Model   Nautical-Tidal  
Manuf.  AlphaMach Inc.  
Status  Stopped  
Firmware  
Memo
```

Mission Info

```
-----  
Local Time  
Progr.  10-02-25 17:04:44  
Started 10-02-25 20:00:00  
Stopped 10-02-25 19:04:00
```

```
UTC Time  
Progr.  10-02-25 21:04:44  
Started 10-03-25 00:00:00  
Stopped 10-02-25 23:04:00
```

```
Red Light Sample Rate (s)    0  
Green Light Sample Rate (s)  0  
Blue Light Sample Rate (s)   0  
InfraRed Light Sample Rate (s) 0  
Ambient Light Sample Rate (s) 60  
Temperature Sample Rate (s)  60  
Pressure Sample Rate (s)     60
```

Calibration Info

```
-----  
A0      0  
A1      5.70248
```

Data Info

```
-----  
Red Light      : (Gain = x1 in counts)  
Green Light    : (Gain = x1 in counts)  
Blue Light     : (Gain = x1 in counts)  
InfraRed Light : (Gain = x1 in counts)  
Ambient Light  : (Gain = x1 in lux)
```


Troubleshooting

Here's some of the most common issues that can be found:

The PitStop Drivr is not properly installed. This means that the software application does not recognize the adaptor. It's can be a missing driver or a short circuit in the cable.

Close the application, reconnect the adaptor, wait until it is recognized by Windows and re-open the Weebutton® software.

Otherwise the drive can be downloaded at the FTDI wed site:

<https://www.ftdichip.com/old2020/FTDrivers.htm>



You have read through the "Troubleshooting" section, and nothing corresponds to your problem:

Don't worry, you can contact us at: info@alphamach.com

Tel: 450-584-3400

info@alphamach.com

We will answer promptly, and we always find a solution.

Accessories

PitStop
PAR0002



Sunshield for iButton,
iBee and Nauticals

Nautical®

✓ **Temperature** -40°C to 85°C
Resolution: 0.01°C | Accuracy: 0.1°C

✓ **Depth (optional)**

Model	Range	Resolution	Precision
Lite	No pressure sensor		
Tidal	10 m	1 mm	± 25mm
Lake	130 m	5 mm	0 to 60m ± 20cm 60 to 130m ± 50cm
Ocean	300 m	5 mm	0 to 300 ± 50cm

✓ **Light**
Red, Green, Blue, IFR & ambient mode

✓ **Memory 190 000 values**

✓ **RFID Communication**
Free PC Software



ALPHA MACH

www.alphamach.com

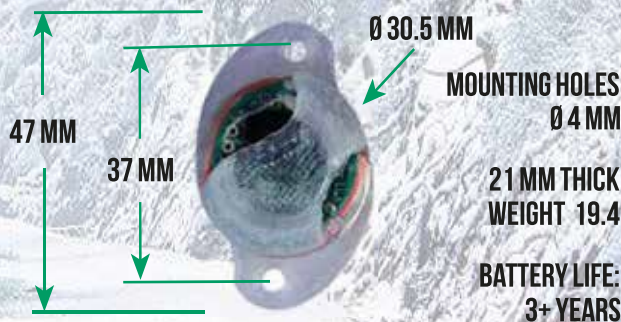
1-450-584-3400 | info@alphamach.com | 619A Richelieu, St-Marc-Sur-Richelieu, QC, Canada J0L 2E0

Accessories

CLIMAT®

- ✓ **Temperature** -10°C to 85°C
Resolution: 0.01°C | Accuracy +/-0.4°C
- ✓ **Humidity** 0 to 100% RH
Accuracy: 0-80% +/- 3%RH / +80% +/-5%
- ✓ **Barometric Pressure** (Optional CLIMAT BARO)
- ✓ **Light**
Red, Green, Blue, IFR & ambient mode
- ✓ **Memory 190 000 values**
- ✓ **RFID Communication**
Free PC Software

	Range	Resolution	Accuracy
At 25°C	1100	0.054	±1.5 mbar
-10 to 85°C	1100	0.054	+/-2.5 mbar



ALPHA MACH

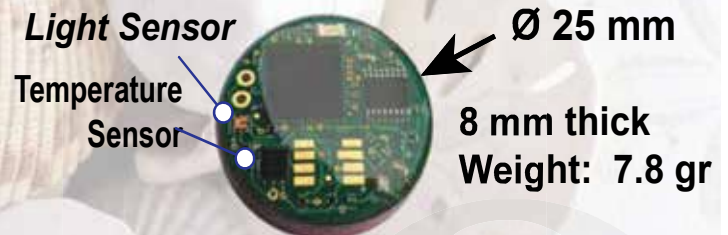
www.alphamach.com

1-450-584-3400 | info@alphamach.com | 619A Richelieu, St-Marc-Sur-Richelieu, QC, Canada J0L 2E0

BisKit®

Temperature & Light Data Logger

- ⊙ **Temperature** -40°C to 85°C
resolution: 0.01°C | precision: 0.125°C
- ⊙ **Light**
Red, Green, Blue, IFR & ambient mode
- ⊙ **Fast TTC** (Thermal response Time)
in water: 26 sec. | in air: 190 sec.
- ⊙ **Memory 190 000 values**
- ⊙ **RFID Communication**



FREE PC Software

ALPHA MACH

www.alphamach.com


1-450-584-3400 | info@alphamach.com | 619A Richelieu, St-Marc-Sur-Richelieu, QC, Canada J0L 2E0

Accessories

TrisKit[®]

Temperature, Depth & Light Data Logger

- ⦿ **Temperature** -40°C to 85°C
 resolution: 0.01°C | precision: 0.125°C
- ⦿ **Depth**

Model	Range	Resolution	Precision
Tidal	10 m.	1 mm	± 25mm
Lake	130 m	5 mm	0 to 60m ± 20cm 60 to 130m ± 50cm
Ocean	300m	5mm	0 to 300 ± 50cm
- ⦿ **Light**
 Red, Green, Blue, IFR & ambient mode
- ⦿ **Memory 190 000 values**
- ⦿ **RFID Communication**





FREE PC Software

ALPHA MACH

www.alphamach.com

1-450-584-3400 | info@alphamach.com | 619A Richelieu, St-Marc-Sur-Richelieu, QC, Canada J0L 2E0

WeePit[®]

- ✓ **Temperature**
 Range -10°C to 60°C
 Resolution: 0.025°C |
 Accuracy: +/- 0.125°C
- ✓ **Memory 92,000 values**
- ✓ **Implantable**
 Medical-grade PETG-based material
- ✓ **RFID Communication**
 FDX 134.2 kHz
 Through flesh
 communication
 
- ✓ **Free PC Software**



ALPHA MACH

www.alphamach.com

1-450-584-3400 | info@alphamach.com | 619A Richelieu, St-Marc-Sur-Richelieu, QC, Canada J0L 2E0

Accessories

WeeDip[®] Temperature Data Logger

- **Temperature**
Range -10°C to 60°C
Resolution: 0.025°C |
Accuracy: +/- 0.125°C
- **Memory 92,000 values**
One time flash
- **Implantable**
medical-grade PETG-based material
- **RFID Communication**
FDX 134.2 kHz
Through flesh
communication
- **Free PC Software**



ALPHA MACH

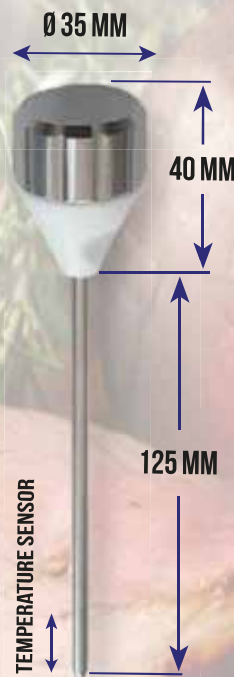
www.alphamach.com

619A Richelieu, St-Marc-Sur-Richelieu, QC, J0L 2E0, Canada
1-450-584-3400 | info@alphamach.com

WEEPIK[®]

MEAT PROCESSING IN AUTOCLAVES AND OVENS

- ✓ **Temperature** -10°C to 125°C
Resolution: 0.025°C | Accuracy +/-0.25°C
- ✓ **Fast Temperature Response Time**
- ✓ **FDA Approved Materials:**
Teflon and Stainless steel Housing
Stainless Steel Probe
- ✓ **Submersible and autoclaves**
pressure resistant



- ✓ **Memory :**
92000 values
- ✓ **RFID Interface**
Communication
with PitStop USB
adaptor
- ✓ **Free PC**
Software
- ✓ **Optional 21 CFR parts**
11 Compliant
- ✓ **Replaceable High**
Temperature
Battery Approx 1+ year

ALPHA MACH

www.alphamach.com

1-450-584-3400 | info@alphamach.com | 619A Richelieu, St-Marc-Sur-Richelieu, QC, Canada J0L 2E0

ALPHA MACH



**619A rue Richelieu
St-Marc-sur-Richelieu, Québec
Canada, J0L 2E0
450-584-3400
info@alphamach.com
www.alphamach.com**